



Sarth Surfacrete
— bringing concepts to reality —

Inspiration

A successful person is a dreamer
whom someone believed in.

Company Profile

COMMITMENT

SARTH SURFACRETE has been evolved with the specific purpose of providing our clientele a Sound, Reliable & Safe structure through our continuously monitored & engineered professional approach. In this competitive Environment, Consistent quality, Technical competency, Customer understanding, are the key for inspiring success. It is our sincere endeavor to deliver to you, within the given framework of time & constraints, an innovative technology without excessive cost over runs.

We at SARTH SURFACRETE assure you of a beneficial relationship & continuous support, we largely look forward to be associated with you in the near future.

QUALITY POLICY

Quality at Sarth Surfacrete is viewed as a continuous improvement in performance to cater the needs of our esteemed customers

We are committed to comply with requirements and to continually improve the effectiveness of our quality management systems, to take the leadership position in construction industry by virtue of our Commitment to quality, innovation, technology and material resources.

VISION

To create a culture with in our company that will in turn create quality minded employees and then top quality performance.

MISSION STATEMENT

Exceptional performance in all aspects of Construction industry
Outstanding customer service
Unparalleled value

SAFETY POLICY

Sarth Surfacrete has a safety policy to protect the health, safety and security of its employees, to minimize the risk to the public from its operations and to protect the natural environment shall ensure that all sub contractors, personnel are briefed, understand and strictly adhere to the provisions of any appropriate policies, standard or guidelines on HSSE.

bringing concepts to reality



Meet our team of Professionals

Mr. Prashant Mahadev Palande

B.E. (Civil)-1994.

Diploma in Construction Management. 1997 (JBIMS)

Masters in Financial Management.(NMIMS)

Bachelor of Civil Engineering from Pune University, Diploma in Construction Management from - Jamnalal Bajaj Institute of Management studies and Masters in Financial Management from - Narsee monjee institute of management studies, Mumbai. Possesses 14 years of experience in Corporate interiors and Industrial construction His strengths are in financial Management, competitive bidding and System Implementation along with Daily operations of Sarth Surfacrete, client relationships and co- ordination of Jobs.

Mr. Naresh Brijlal Patil

B.E. (Civil)-1994

Diploma in Construction Management. 1997

Bachelor of Civil Engineering from - Amravati University and Diploma in construction management - Jamnalal Bajaj Institute of Management studies, Mumbai has over 15 years of experience in Corporate Interiors and Residential and Commercial construction. He is well versed in all aspects of construction works with corporate Interiors, Hospitality, clinical, Institutional projects. He is responsible to maintain and control all aspects of the project through daily Quality compliance, Sub contract administration, On going progress reports, on site quality inspection and Vendor finalization



Mr. Sachin Sudhir Sahasrabudhe

Diploma in Civil Engineering. 1994.

Diploma in Civil Engineering from Mumbai Technical Board has over 14 years of experience in Residential and Industrial construction. He can maintain excellent quality control for his client and is responsible to maintain and control all aspects of the project through controlling of sub contractors and labour management, Estimates and billing of construction work Appointments of vendors and suppliers for on going projects. He is involved in store management for the tools, plants and machinery, wooden and steel shuttering and centering. His focus is on aspects relating to properties.

Mr. Ravindra Sadashiv Kutal

Diploma in Civil Engineering. - 1994.

Diploma in Civil Engineering from Mumbai Technical Board has over 14 years of experience in Residential and Industrial construction and Interiors. He focuses on controlling the Daily operations, Labour management, On going progress reports and Vendor finalization for a construction project. He is involved in Accounting and Tax Management in co-ordination with the tax consultant for the overall business

'SUCCESS' 'I THINK I CAN' - four magic words that create success



Our Clients

- British Gases Exploration and Production India Ltd.
- British Oxygen Company
- Raymonds Limited
- Lokhandwala Infrastructure Pvt. Ltd.
- Aquachem Enviro Engineers Pvt. Ltd.
- Gujarat Gas Company Ltd.
- Wigan and Leigh College
- Lead Sof Solutions
- Adventity BPO Pvt. Ltd.
- Bombay Intelligence Security Ltd.
- Chemtreat Composites Pvt. Ltd.
- Erling Klinger Automotive Components India Ltd.
- Evershine Builders
- XPS Services
- Kirloskar Oil Engines
- Mahanagar Press
- Apollo Clinic
- Quicker
- Nagarjuna Construction Co.
- The Times Of india
- Sandoz India Ltd.
- Teachers training College
- Seimens India Ltd.
- Sutherland Global Services
- Aarav Fragrances & Flavors Pvt. Ltd.
- Avocn Controls Pvt. Ltd.
- Bal Krishna Industries Limited
- GMS Construction
- Hindustan Unilever Ltd.
- NRG Industries
- Positive Packaging
- Shalina Laboratories Pvt. Ltd.
- Speed Fam (India) Pvt. Ltd.
- (Volvo) Ba Wen Infra Equip Pvt. Ltd.
- Wam India Pvt. Ltd.
- Wanbury Ltd.
- Zicom Electronic Security System Ltd.



FIELD OF OPERATIONS

- Corporate Interiors
- Civil Engineering and Turnkey Projects
- Construction of commercial and Industrial Building
- Plumbing and Sanitation Works.
- Civil Landscaping



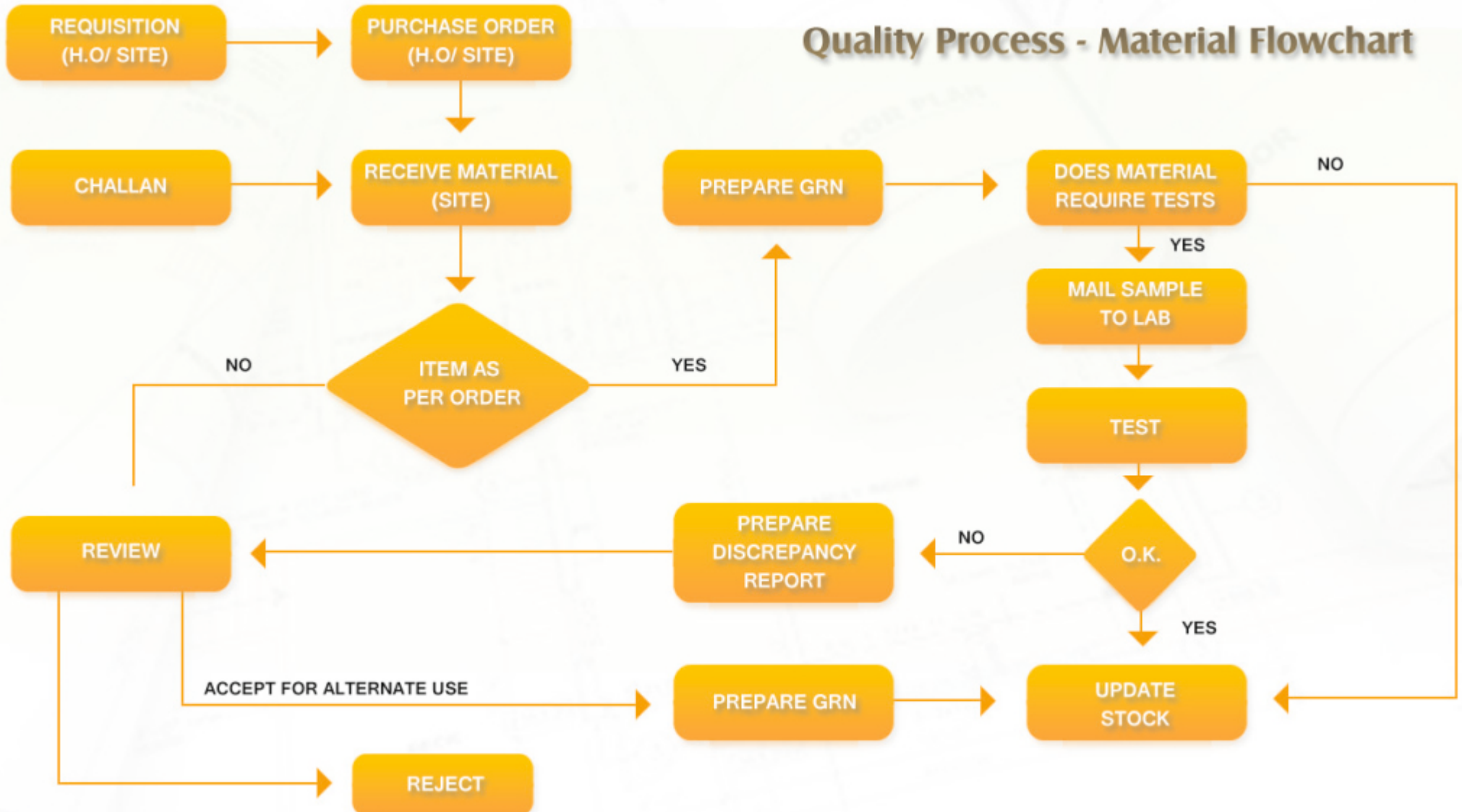
Organization Chart

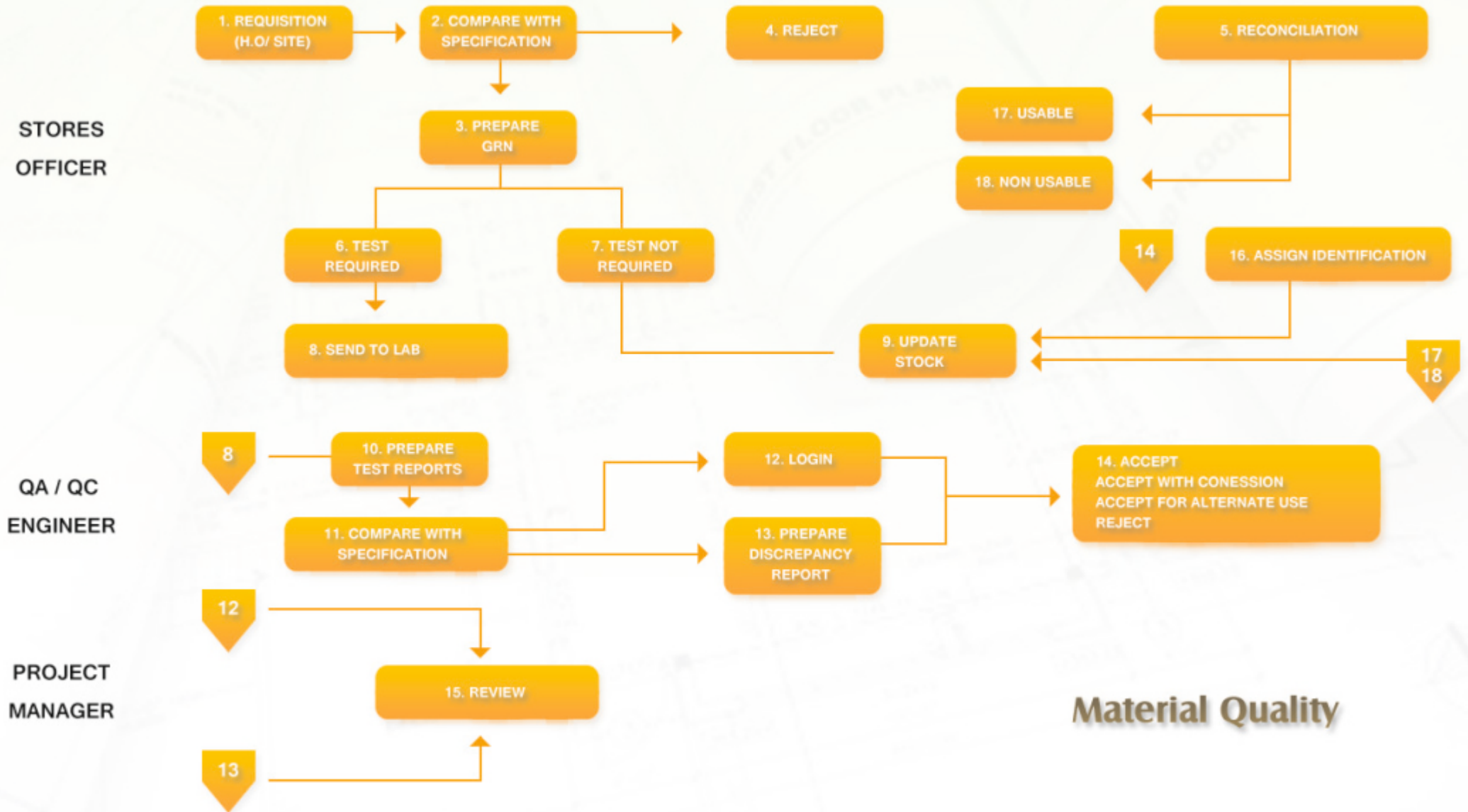


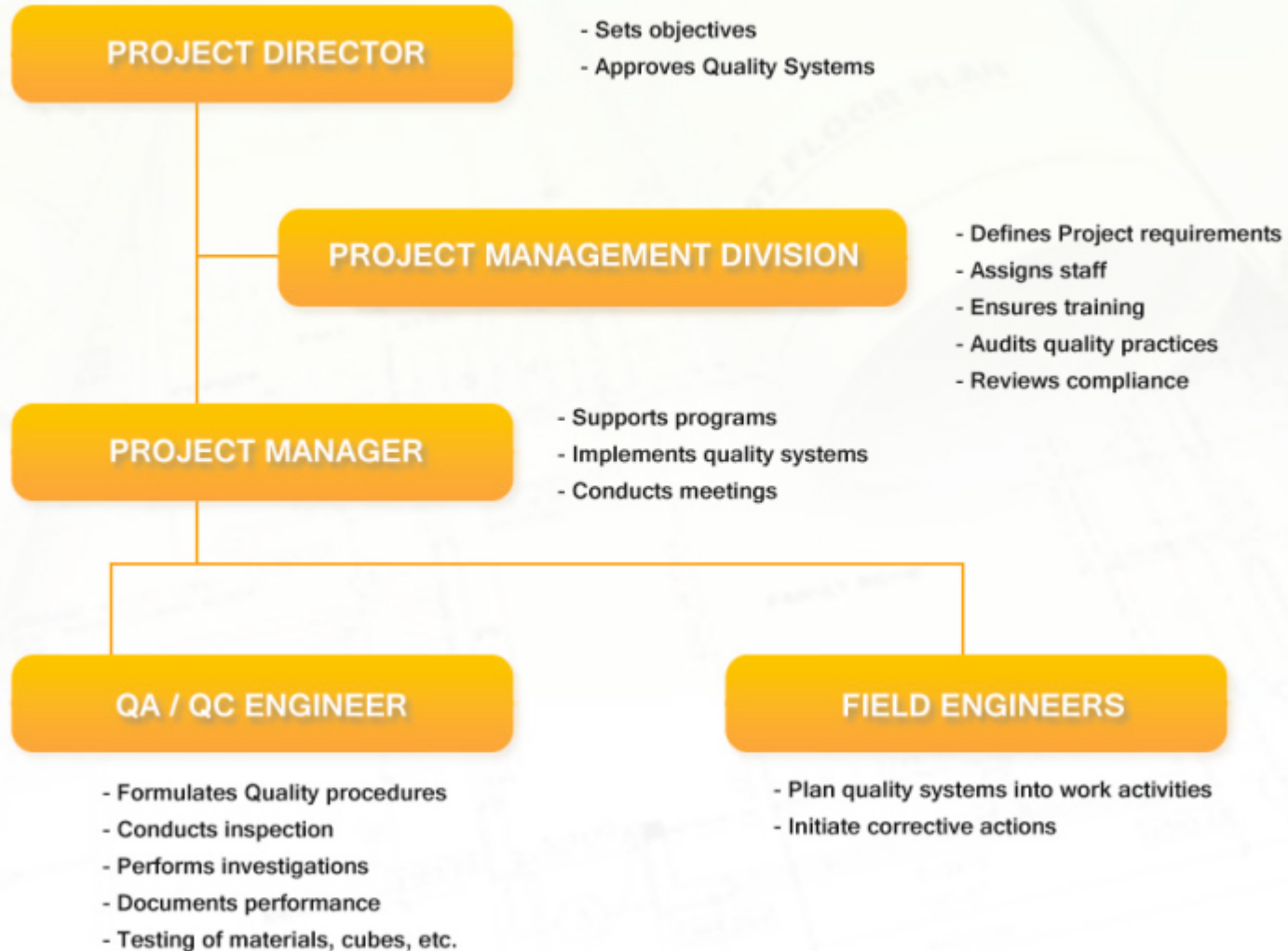
Management System

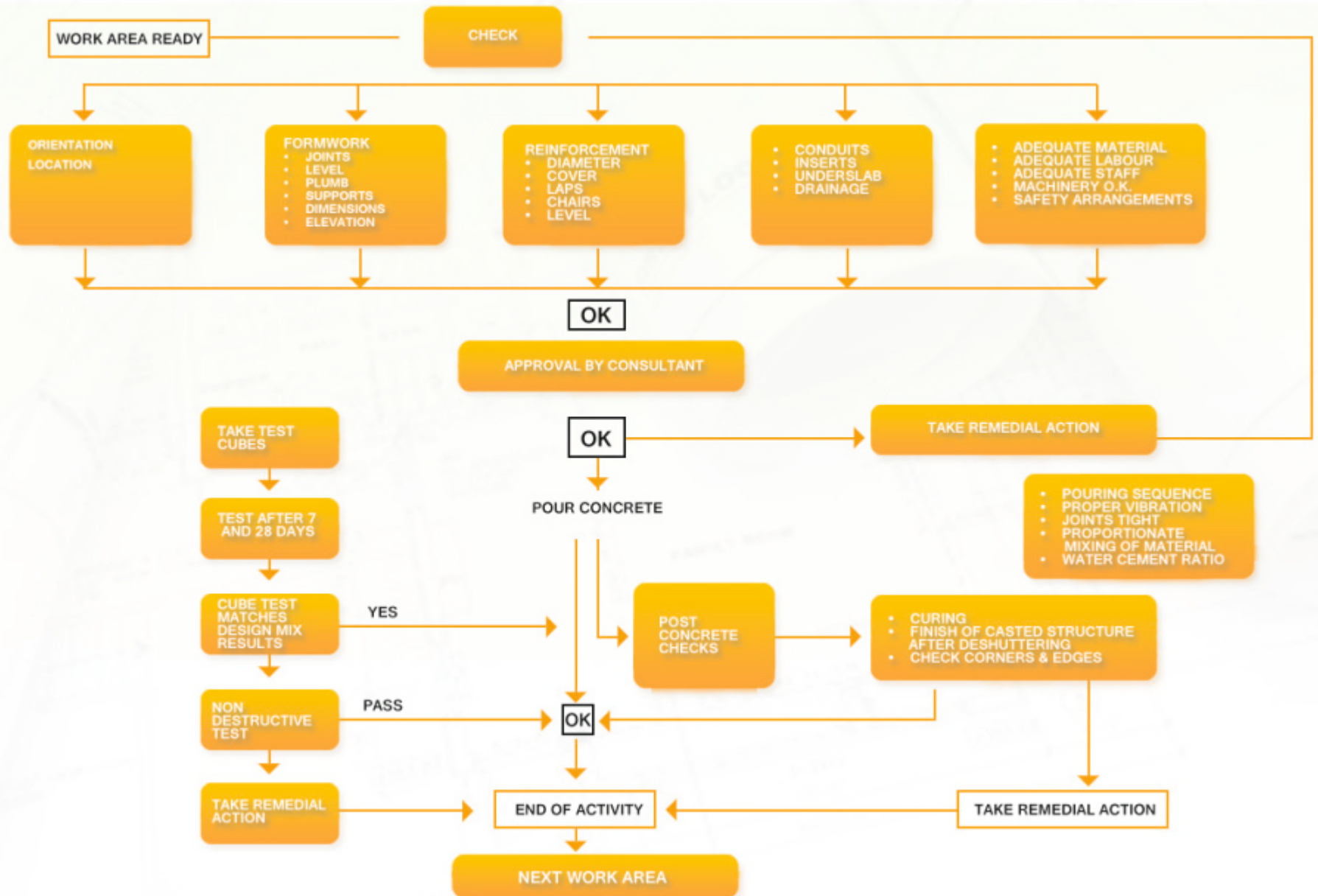


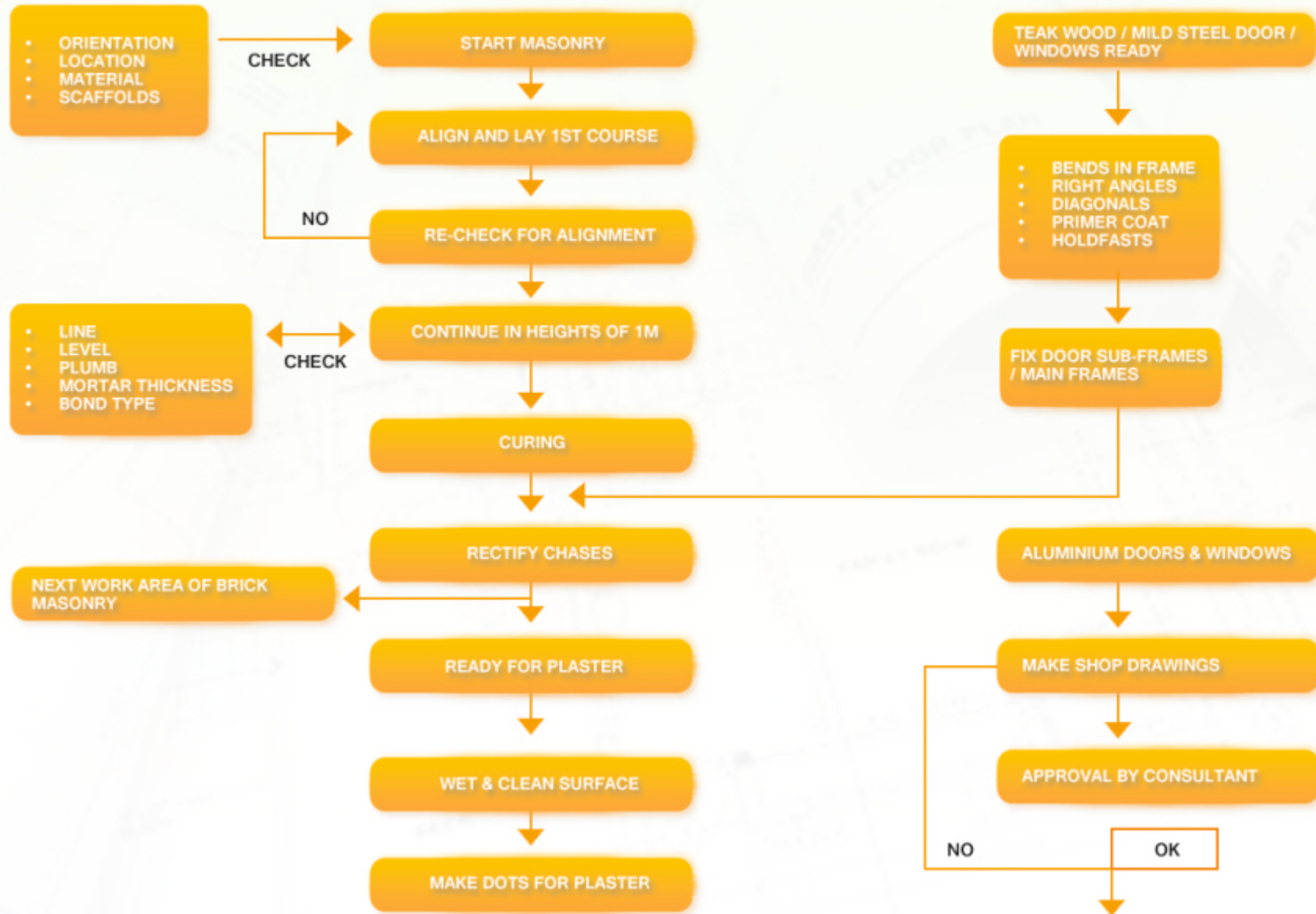
Quality Process - Material Flowchart

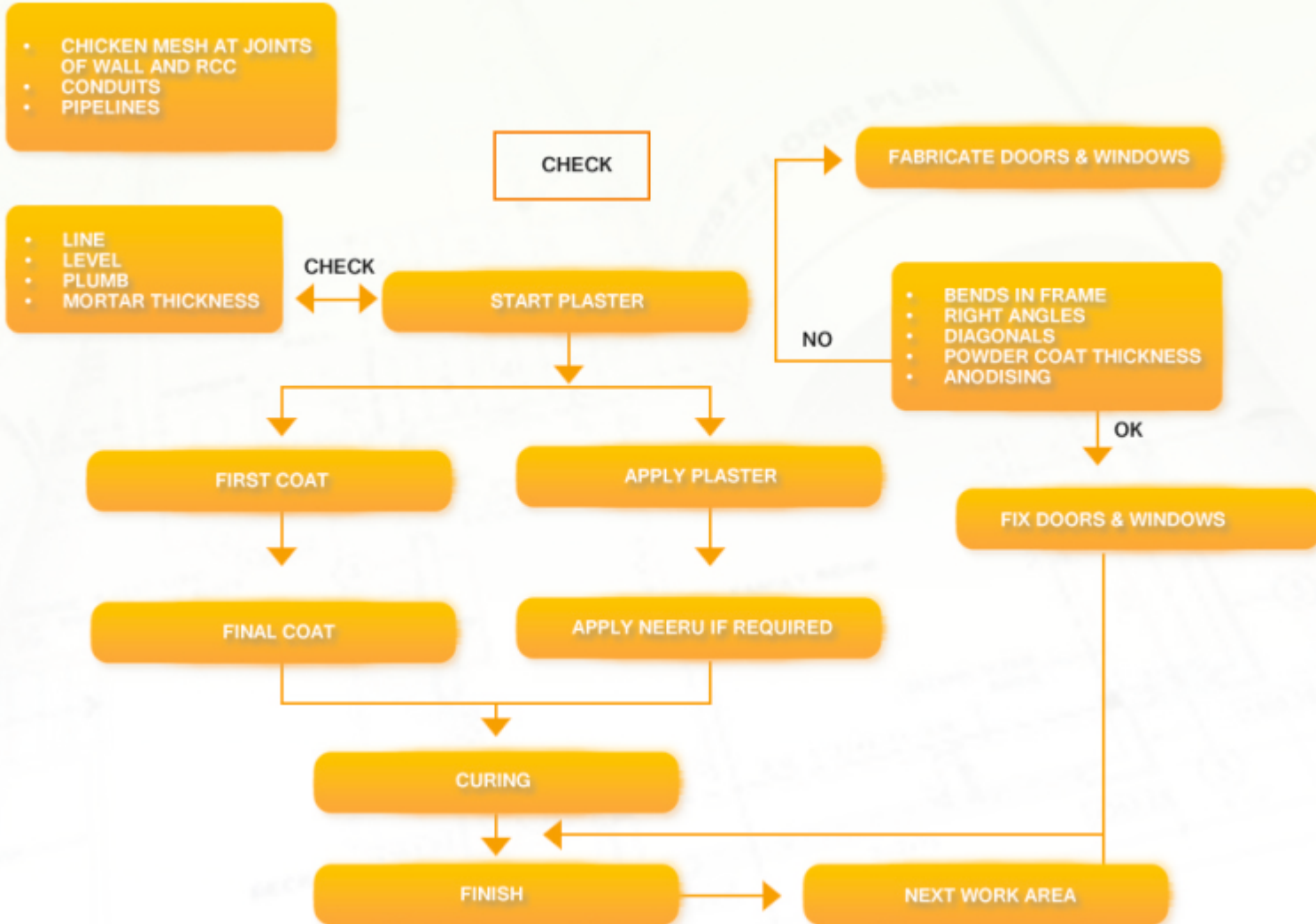












Safety Procedures

1POINTS OF OPERATION:

2 POINTS OF CHECKING

3 POINTS OF CORRECTIVE ACTION IN CASE OF DEVIATION:

- PURPOSE: To avoid the possibility of electric shock.
- PURPOSE: To avoid accidents this may result due to reinforcement works.
- PURPOSE: To avoid accidents this may result due to collapse of earth during excavation.
- PURPOSE: To avoid accidents this may result due to concrete mixers.
- PURPOSE: To avoid accidents this may result due to fall of workers/material from the height.
- PURPOSE: To avoid accidents this may result due to fabrication.
- PURPOSE: To avoid accidents this may result due to Break failure, skidding Overturning, Rear movement, Detachment of wheels of Machineries, Proclains etc used for civil works.
- PURPOSE: To reduce snake/scorpion bite cases and related causalities.
- PURPOSE: Precautions against slippage from steep slope while to doing survey work on steep hilly Terrain.
- PURPOSE: Precaution against any accident due to Break failure, skidding, Overturning Rear movement, Detachment of wheels of Machineries, Poclains etc. used for civil works
- PURPOSE: To avoid accidents this may result due to shuttering and centering Works.

LIST OF PLANT & MACHINERY & OTHER TOOL / TACKLES

Name of Machine / Tool & its Description.	Qty. in Nos.	Make
Concrete pumping machine of Schwing stetter of 350 D	1 No	Schwing Stetter
Concrete mixer of 0.5 cum capacity	1No	Universal.
Trimix machine Set including Surface Vibrator and Disc floaters.	3 Sets.	-----
Concrete Mixer	5 Nos.	Gubbi
Petrol driven concrete vibrator with 25 mm needle.	15Nos.	Universal.
Electrical Grinder.	10 Nos.	Hitachi.
Marble Cutter Machine	10 Nos.	Hitachi.
Electric drills up to 13, 20, 40mmmm dia. For cleaning the reinforcement.	15Nos.	Hilti Ltd.
Water storage tanks of 5000 lts.	5 Nos.	Steel.
Water pumps of 1 HP.	10 Nos.	Kirloskar.
Trays for mixing Mortar, Concrete, etc.	12 Nos.	Tin (G.I)
Steel scaffolding - A) H frames. B) Pipe coupler system	2500 Nos.	---
Safety Helmet Safety belt.	200 Nos. 20 Nos.	ISI Mark.
Concrete breaker Machine (10 Kgs)	8 Nos.	Hilti Ltd
Material Lifting Machine.	1 Nos.	Gubbi.
Submersible dewatering Pump.	6 Nos.	Cromtron Greaves
Steel & Wooden Shuttering & Centering	3500 SQM.	----
Jack props	1500 Nos.	

Cost Reduction by Value Engineering

Value analysis for major resources by avoiding wastage of resources

e.g. Preparing of shop drawing for structural roofing (M.S section) and lengths of roofing sheets and cladding sheets for wastage reduction.

Good workmanship requiring no frequent redoing or rejection of work

Efficient and effective materials management involving economical buying, storage for a short period and no deterioration of material.

New material may be introduced in the market in consultation with the consultant and client.

Budgeting of project for Civil Works

Re estimation of project needs to be done after receiving the required data for detailed estimation.

Detailed working drawings including plan, elevation, section, site plan, index plan etc.

Strata details

R.C.C drawing for foundation, beams, slabs, lintels etc.

Roofing drawings

Detailed specifications

General specification

Location and working conditions at work site.

Taking out measurement and calculation of quantities

Abstract of estimated cost

Comparing the same with tender quantities

In case of deviation in quantities needs to be informed to the consultant and re considered for estimation.

Tender quantities needs to be amended as per reconciliation.

In case of extra items the rates needs to be submitted with the rate analysis and amended.

Scheduled of requirement of materials procured by the clients to be submitted to the client as per MSP.

Transparency In Functioning

- We believe in team work.
- Each & every thing in the interest of the project, technically & financially will be shared, discussed & then implemented.
- Customer Satisfaction is our motto.

OUR STRENGTH

- Completion of the project within stipulated timeframe with emphasis on quality and safety.
- Technical involvement in the projects leading to the cost & time optimization.
- Young, dynamic and enthusiastic Team.











BKT
GROWING TOGETHER

















