



Sarth Surfacrete

— bringing concepts to reality —

Civil Engineering & Turnkey Projects

Company Profile

COMMITMENT

SARTH SURFACRETE has been evolved with the specific purpose of providing our clientele a Sound, Reliable & Safe structure through our continuously monitored & engineered professional approach. In this competitive Environment, Consistent quality, Technical competency, Customer understanding, are the key for inspiring success. It is our sincere endeavor to deliver to you, within the given framework of time & constraints, an innovative technology without excessive cost over runs.

We at **SARTH SURFACRETE** assure you of a beneficial relationship & continuous support, we largely look forward to be associated with you in the near future.

QUALITY POLICY

Quality at Sarth Surfacrete is viewed as a continuous improvement in performance to cater the needs of our esteemed customers

We are committed to comply with requirements and to continually improve the effectiveness of our quality management systems, to take the leadership position in construction industry by virtue of our Commitment to quality, innovation, technology and material resources.

VISION

To create a culture with in our company that will in turn create quality minded employees and then top quality performance.

MISSION STATEMENT

Exceptional performance in all aspects of Construction industry
Outstanding customer service
Unparalleled value

SAFETY POLICY

Sarth Surfacrete has a safety policy to protect the health, safety and security of its employees, to minimize the risk to the public from its operations and to protect the natural environment shall ensure that all sub contractors, personnel are briefed, understand and strictly adhere to the provisions of any appropriate policies, standard or guidelines on HSSE.

bringing concepts to reality



' ACTION ' - Action awakens interest and enthusiasm more than anything else.

Meet our team of Professionals



Mr. Prashant Mahadev Palande

B.E. (Civil)-1994.

Diploma in Construction Management. 1997 (JBIMS)

Masters in Financial Management. (NMIMS)

Bachelor of Civil Engineering from Pune University, Diploma in Construction Management from - Jamnalal Bajaj Institute of Management studies and Masters in Financial Management from - Narsee monjee institute of management studies, Mumbai. Possesses 14 years of experience in Corporate interiors and Industrial construction His strengths are in financial Management, competitive bidding and System Implementation along with Daily operations of Sarth Surfacrete, client relationships and co- ordination of Jobs.

Mr. Naresh Brijlal Patil

B.E. (Civil)-1994

Diploma in Construction Management. 1997

Bachelor of Civil Engineering from - Amravati University and Diploma in construction management - Jamnalal Bajaj Institute of Management studies, Mumbai has over 15 years of experience in Corporate Interiors and Residential and Commercial construction . He is well versed in all aspects of construction works with corporate Interiors, Hospitality, clinical, Institutional projects. He is responsible to maintain and control all aspects of the project through daily Quality compliance, Sub contract administration, On going progress reports, on site quality inspection and Vendor finalization

Mr. Sachin Sudhir Sahasrabudhe

Diploma in Civil Engineering. 1994.

Diploma in Civil Engineering from Mumbai Technical Board has over 14 years of experience in Residential and Industrial construction. He can maintain excellent quality control for his client and is responsible to maintain and control all aspects of the project through controlling of sub contractors and labour management, Estimates and billing of construction work Appointments of vendors and suppliers for on going projects. He is involved in store management for the tools, plants and machinery, wooden and steel shuttering and centering. His focus is on aspects relating to properties.

Mr. Ravindra Sadashiv Kutal

Diploma in Civil Engineering. - 1994.

Diploma in Civil Engineering from Mumbai Technical Board has over 14 years of experience in Residential and Industrial construction and Interiors. He focuses on controlling the Daily operations, Labour management, On going progress reports and Vendor finalization for a construction project. He is involved in Accounting and Tax Management in co-ordination with the tax consultant for the overall business

‘ SUCCESS ’ - 'I THINK I CAN'- four magic words that create success.

OUR CLIENTS

- British Gases Exploration and Production India Ltd
- British Oxygen Company
- Raymonds Limited
- Aquachem Enviro Engineers Pvt. Ltd.
- Gujarat Gas Company Ltd.
- Wigan and Leigh College
- Lead Soft Solutions
- Adventity BPO Pvt. Ltd.
- Bombay Intelligence Security Ltd.
- Chemtreat Composites Pvt. Ltd.
- Erling Klinger automotive Components India Ltd.
- Evershine Builders
- XPS services
- Kirloskar Oil Engines
- Mahangar Press
- Apollo Clinic
- Avcon Controls Pvt. Ltd.
- Echiban Honda.
- Kijiji India Private Ltd.
- Glitters Pvt. Ltd.
- Gold Star Pvt. Ltd.
- Diameter Pvt. Ltd.
- Nagarjuna Construction Co.
- The Times Of India
- Sandoz India Ltd.
- Teachers Training College
- Seimens India Ltd.



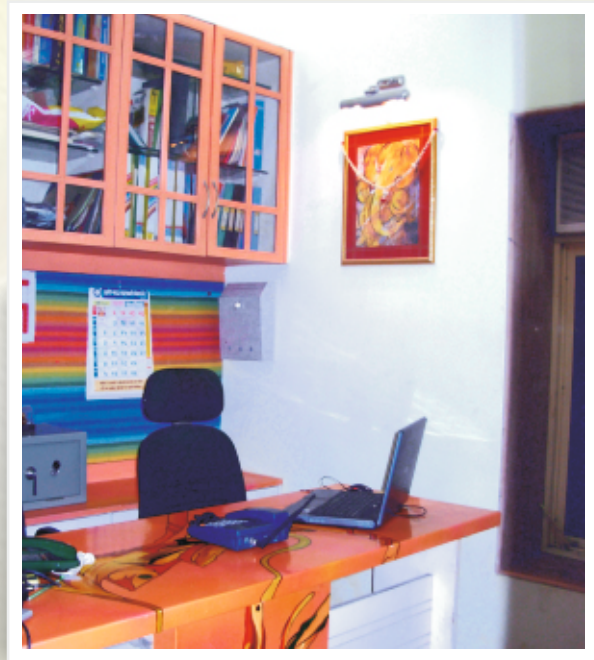
FIELD OF OPERATIONS

- Corporate Interiors
- Civil Engineering and Turnkey Projects
- Construction of commercial and Industrial Building
- Structural Repairs and Renovation of commercial and Industrial Building
- Trimix and Epoxy Flooring
- Polymer based water proofing and painting
- Plumbing and Sanitation Works.
- Civil Landscaping

‘ ADJUSTMENT ’ - Do not blame one another for things that go wrong.

OUR ARCHITECTS

- Parijat Misra and Associates
- Design Consortium
- Esthete Architect and consultants Pvt. Ltd.
- Thakkar and Associates
- Mandar Joshi and associates
- Despande and Associates
- Vijay Punjabi Consultants Pvt. Ltd.
- Aruni Patil and Associates
- Damle and Associates
- BSR Associates



OUR STRUCTURAL AND PROJECT MANAGEMENT CONSULTANT

- Engineering Creations Pvt. Ltd.
- Vinayak Chopdekar and Associates
- Gadkari and Associates
- Epicons Consultants Pvt. Ltd.
- Damle and Thakur Desai consulting structural Engineers
- P. M. Pandit and associates

Teamwork shares the task,
multiplies the effort and ensures the success

‘ HEALTHY DIET ’ - For healthy mind & body for successful business.

Organisation at glance

Directors

Prashant Mahadev Palande

B.E. (Civil)-1994.

Diploma in Construction Management. (JBIMS)

Masters in Financial Management. (NMIMS)

Naresh Brijlal Patil

B.E. (Civil) 1994

Diploma in Construction Management. (JBIMS)

Ravindra Sadhashiv Kutal

(Civil Engineer)

Sachin Sudhir Sahasrabudhe.

(Civil Engineer)

Wellness & Ops

Reena Lodhia (Sr. Manager)

Project Engineers

Mohan patil

Sandeep Mane

Satish Parate

Sushil Dubey

Abhay Chaulkar

Tejas Jadhav

Swapnil Shelke

Jayvind Yadav

Deepak Mandloi

Kundan Gaikwad

Sacchidanand Revankar

Shivam Mishra

Purchase Department

Vinesh Pawar

Sujata Talekar Chavan

Sachin Bangar

Parag Kandekar

Vinaya Jondhale

Omkar Ghadge

Anil Shah

Ganesh Shirke

Vikas Patil

Safety Supervisors

Kushal Mali

Rishikesh Shete

Firoz Mohammed

Mahendra Chaudhari

Vikas Bhosle

Senior Supervisors

Deepak Dhore

Jayram Lone

Vishal Bhosle

Arvind Kadam

Vishal Waggankar

Pramod Suryavanshi

Sangram Katkar

Sultan Samad

Shrinivas Yelsani

Interior Designer

Priyanka More Chavan

Rohan Katkar

Aishwarya Palande

Office Assistant

Kishor Deshmukh

Babu Pawar

Tejas Margaj

Billing & Quantity Surveyors

Rajesh Naik

Siva Kumar.C

Ranjeet Padel

Apeksha Patil

HR Admin & Legal Consultant

Saee Sahsrabuddhe

Supriya Dandekar

Sulabha Sunil Warbhuvan

Manali Telge Beldar

Nitin Londhe

Sughanda Mirajkar

Accountant

Pratiksha Deshmukh

Harshada Wagh

Vikram Deshmukh

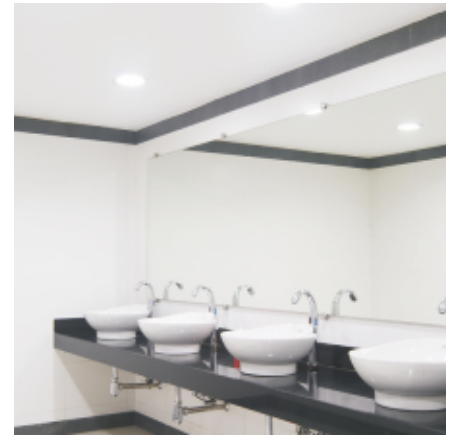
‘ HARMONY ’ - Keeping harmony in your work is the only way of ensuring its steady progress and your own peace of mind.

Corporate Office



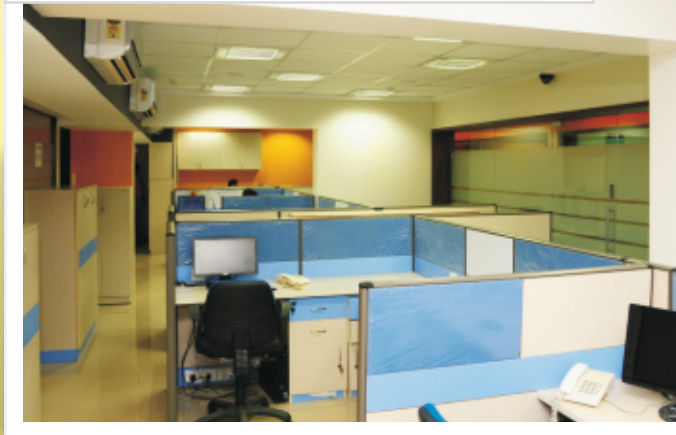
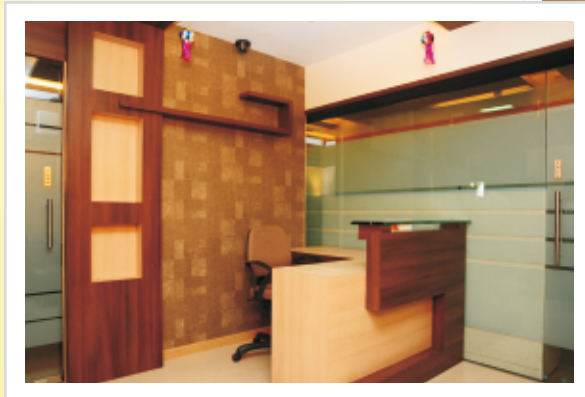
' OPTIMISM ' - Perpetual optimism is a force multiplier

Corporate Office



' TEAMWORK ' - Teams do not seek consensus; they seek the best answer.

Corporate Office



‘ PROBLEM SOLVING ’ - Problems and their solution should be studied as a separate art.

Corporate Office



' AFFIRMATIONS ' - My word is my bond.

Corporate Office



‘ PROBLEM SOLVING ’ - Problems and their solution should be studied as a separate art.

Corporate Office



‘ AFFIRMATIONS ’ - My word is my bond.